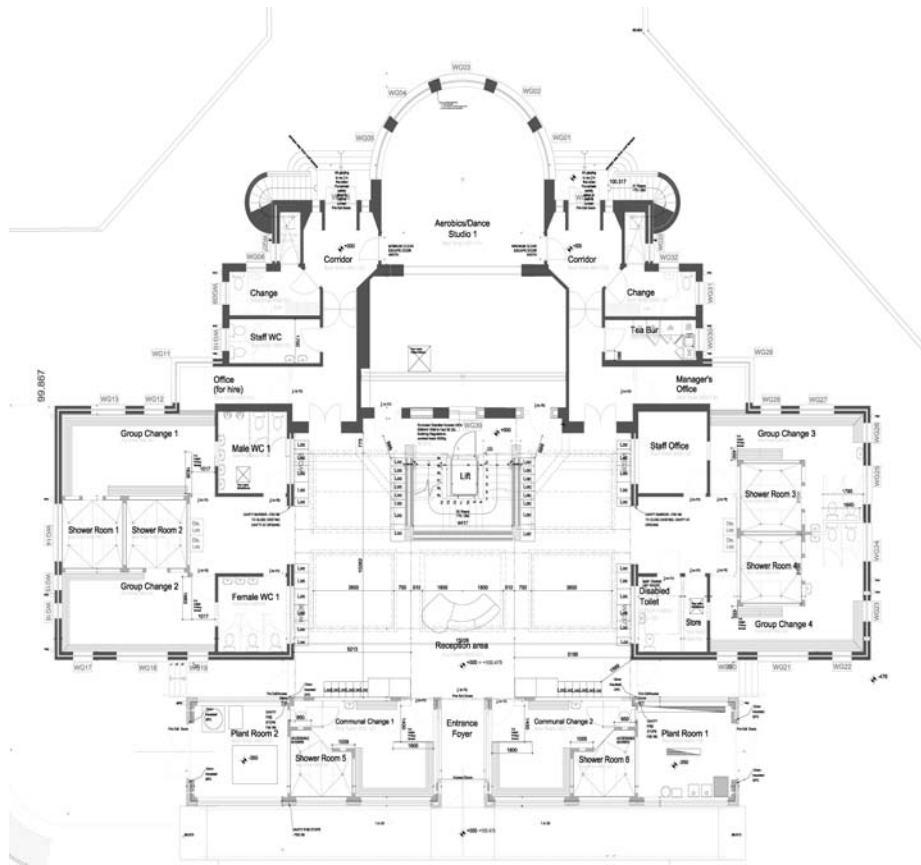


NEW PENILEE PAVILION DEVELOPMENT

Opening February 2010.

GROUND FLOOR PLAN



Facilities

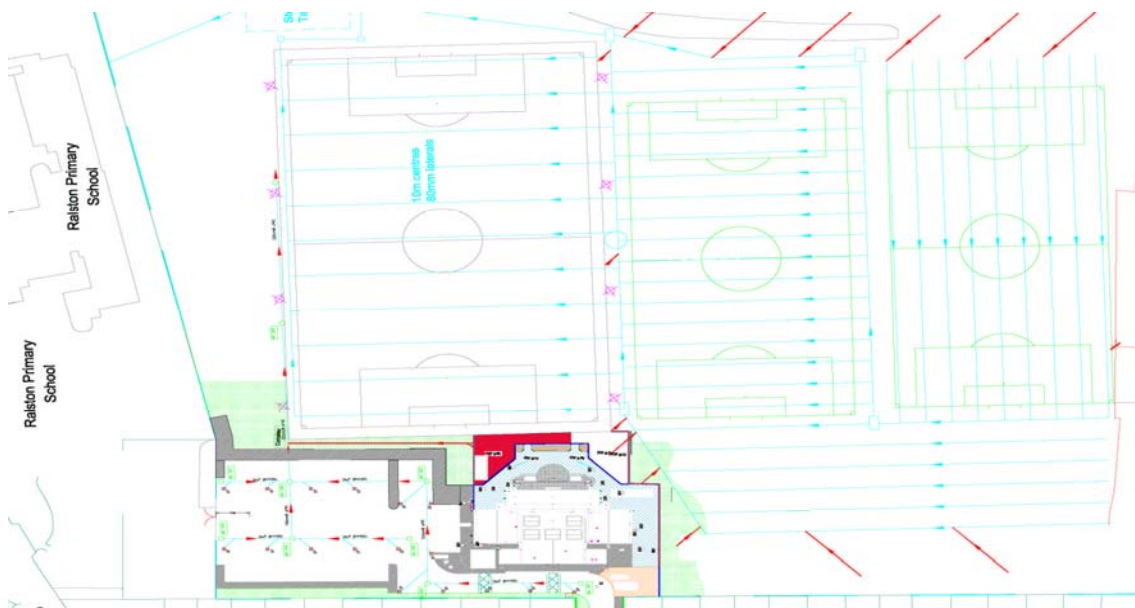
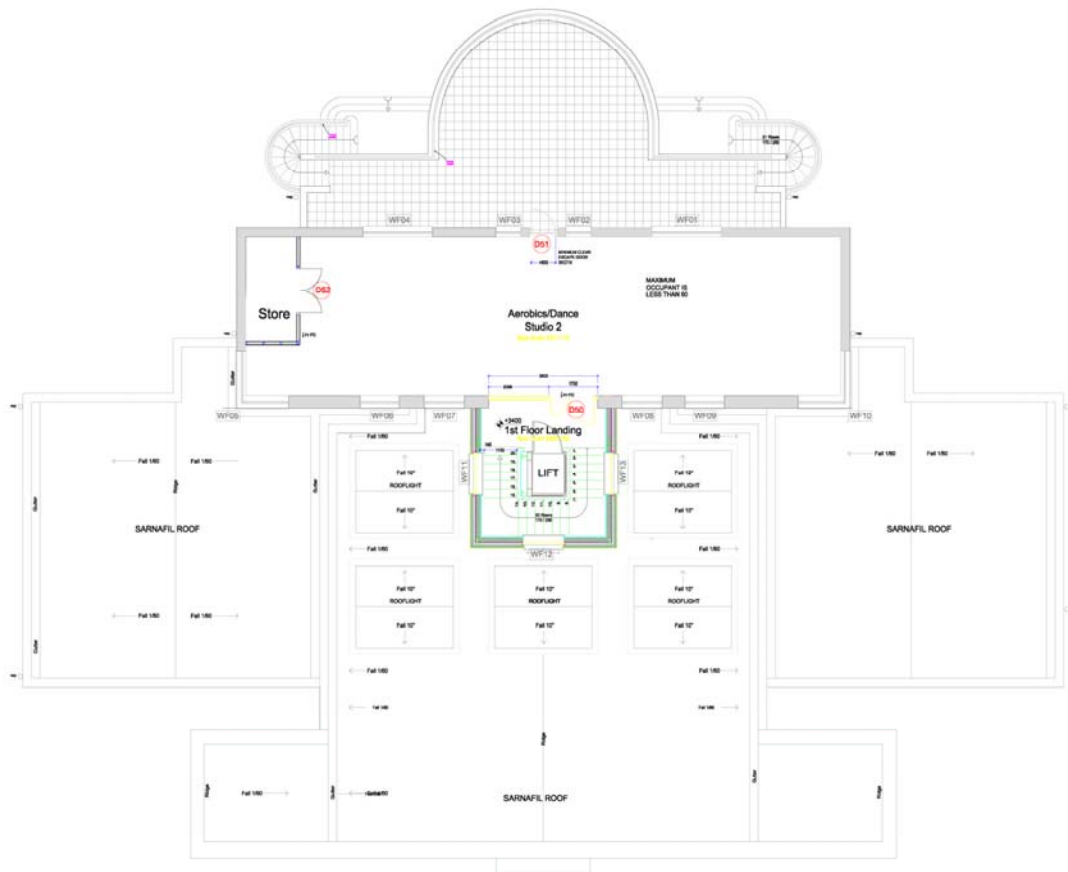
- Entrance/Reception Foyer
- 2 Aerobic and Dance Studio's
- 8 Changing Rooms
- 1 Flood lit Synthetic Pitch
- 2 Grass Football Parks

The facilities within the pavilion will offer a range of activities including: a weekly fitness programme, 7-a – side and 11-a –side football games, after school youth programmes and camps, leagues and competitions and social function hires along with other leisure and social activities offered by club and group use through regular lets and block bookings.

All Individuals, clubs and groups interested in booking the Pavilion should contact

Michael Breen: email michael.breen@renfrewshire.gov.uk or by phone 0141 889 4000

UPPER LEVEL FLOOR PLAN



GROUND PLAN