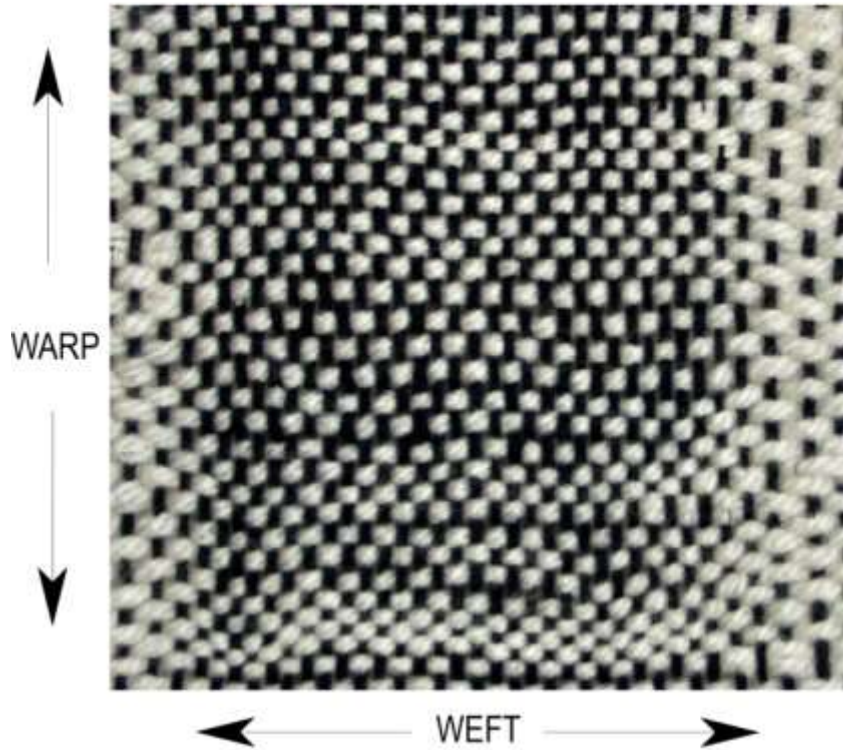


# PLAIN WEAVE

## What is a plain weave?

Plain weave is the most common type of weave as it creates a very strong, dense fabric suitable for lots of different uses. This is achieved with each warp string and weft yarn interlocking by going over one and under one in each row, forming a criss-cross structure.



### Plain weave instructions

Warp up the loom - using contrasting colours for the warp and weft can make weaving easier. Thread up and knot some yarn on to the needle.

#### Row 1

Go **UNDER ONE** and **OVER ONE** warp string across the first row.

#### Row 2

If the weft yarn goes over the last warp thread, row 2 will go **UNDER ONE** then **OVER ONE**.

If the weft yarn goes under the last warp thread, row 2 will go **OVER ONE** then **UNDER ONE**.

Apply this rule to all further rows. Weaving rows 1 then 2 repetitively will result in each row weaving the opposite to the one before. Make sure to beat down each completed row, try not to pull too tightly on the weft yarns and always leave yarn tails for each new weft used. Refer to 'Taking weave off the loom' video and notes to complete the weave.

#### **Weaving tip:**

*Try out the hopsack weaving tutorial next to see how different a plain weave can look by making the small change of how many warp and weft threads you weave at a time it a try next.*

Watch the instruction video

[https://www.youtube.com/watch?v=Asp9\\_BfG\\_H4](https://www.youtube.com/watch?v=Asp9_BfG_H4)



A collaboration of  
**Paisley Museum's 'Looms in Schools' project**  
 &  
**Artisan's Institute 'Young Weavers Project'**



Paisley  
 Townscape  
 Heritage and  
 Conservation Area  
 Regeneration  
 Scheme



HISTORIC  
 ENVIRONMENT  
 SCOTLAND



Renfrewshire Leisure  
 Cultural Services