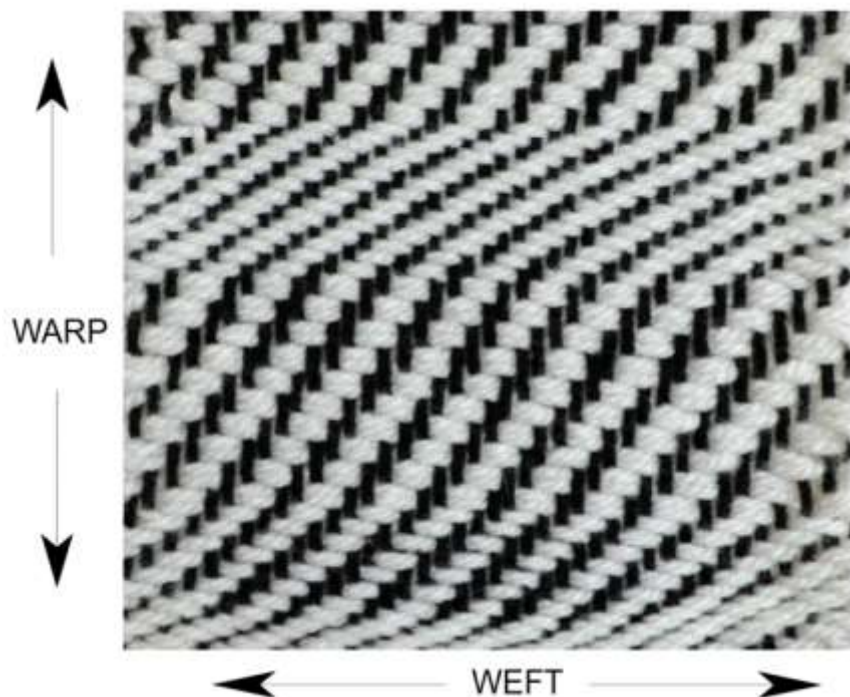


2/2 TWILL WEAVE

What is a 2/2 twill weave?

A 2/2 twill is a balanced weave, meaning that the pattern uses the same amount of warp strings (2) and weft yarns (2) to produce a diagonal striped appearance. The stripe is built by staggering one warp thread in each row of the weaving, and continuously weaving all four rows of the pattern repeat.



2/2 Twill Instructions

As a 2/2 twill repeats after every 4 warp strings and weft passes, warp up a number of strings that multiplies by 4 (for example, 24, 28, 32)...

Row 1

UNDER 2, OVER 2, UNDER 2, OVER 2...

Row 2

UNDER 1, then: OVER 2, UNDER 2, OVER 2, UNDER 2...

Row 3

OVER 2, UNDER 2, OVER 2, UNDER 2...

Row 4

OVER 1, then: UNDER 2, OVER 2, UNDER 2, OVER 2...

Weave rows 1, 2, 3, 4 repetitively to build up a diagonal stripe. Try doubling up the weft or using a thicker yarn to see how it affects the pattern. Refer to the 'Taking weave off the loom' video and notes to complete the weave.

Weaving tip:

When you complete a 2/2 weave, try the 3/1 twill tutorial to spot the difference between a 'balanced' and a 'warp faced' pattern. Place the samples side by side and compare.

Watch the instruction video

<https://www.youtube.com/watch?v=vznzwwgiuofc>



A collaboration of
Paisley Museum's 'Looms in Schools' project
&
Artisan's Institute 'Young Weavers Project'



Paisley
Townscape
Heritage and
Conservation Area
Regeneration
Scheme

