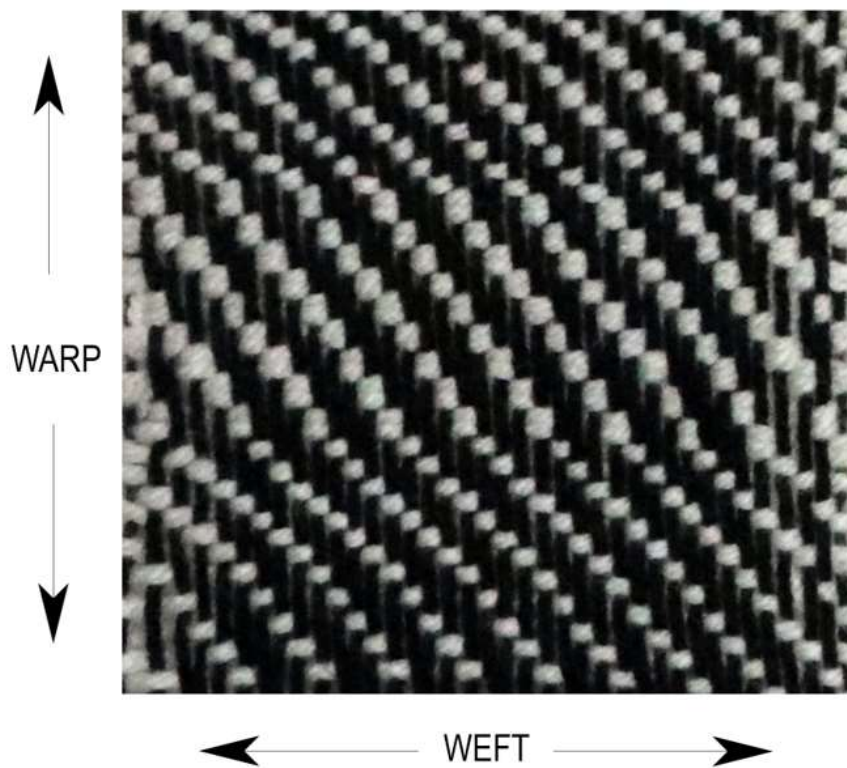


3/1 TWILL WEAVE

What is a 3/1 twill weave?

A 3/1 twill is a 'warp faced' weave, meaning the warp strings will be more visible in the pattern than the weft yarns. The name 3/1 therefore represents 3 warp strings and 1 weft yarn being used to build up the diagonal stripe.



3/1 Twill Instructions

As a 3/1 twill repeats after every 4 warp strings and weft passes, warp up a number of strings that multiplies by 4 (for example, 24, 28, 32)

ROWS 1 & 2

UNDER 1, OVER 1, then,

UNDER 3, OVER 1, UNDER 3, OVER 1...

Go UNDER 1, OVER 1 on the last 2 warps strings for rows 1&2.

ROWS 3 & 4

UNDER 1, OVER 1, UNDER 1, OVER 1, then:

UNDER 3, OVER 1, UNDER 3, OVER 1....

Weave rows 1, 2, 3, 4 repetitively to build up a diagonal stripe. Try doubling up the weft or using a thicker yarn to see how it affects the pattern. Refer to the 'Taking weave off the loom' video and notes to complete the weave.

Weaving tip:

When you complete a 3/1 weave, try the 1/3 twill tutorial to spot the difference between a 'warp faced' and a 'weft faced' pattern. Place the samples side by side and compare...

Take a look at the back of the 3/1 twill - the reverse side is a 1/3 weave!

Watch the instruction video

<https://www.youtube.com/watch?v=eaCKKPfyMa4>



A collaboration of
Paisley Museum's 'Looms in Schools' project
&
Artisan's Institute 'Young Weavers Project'



Paisley
Townscape
Heritage and
Conservation Area
Regeneration
Scheme



Renfrewshire Leisure
Cultural Services